

高雄國際機場

KAOHSIUNG INTL AD

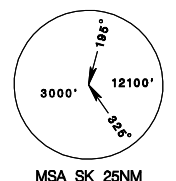
RCKH SID
 HCN 1C(RWY09)
 HCN 1D(RWY27)

KAOHSIUNG APP 124.7 125.7	KAOHSIUNG TWR 118.7 120.7	ATIS 127.8
------------------------------	------------------------------	---------------

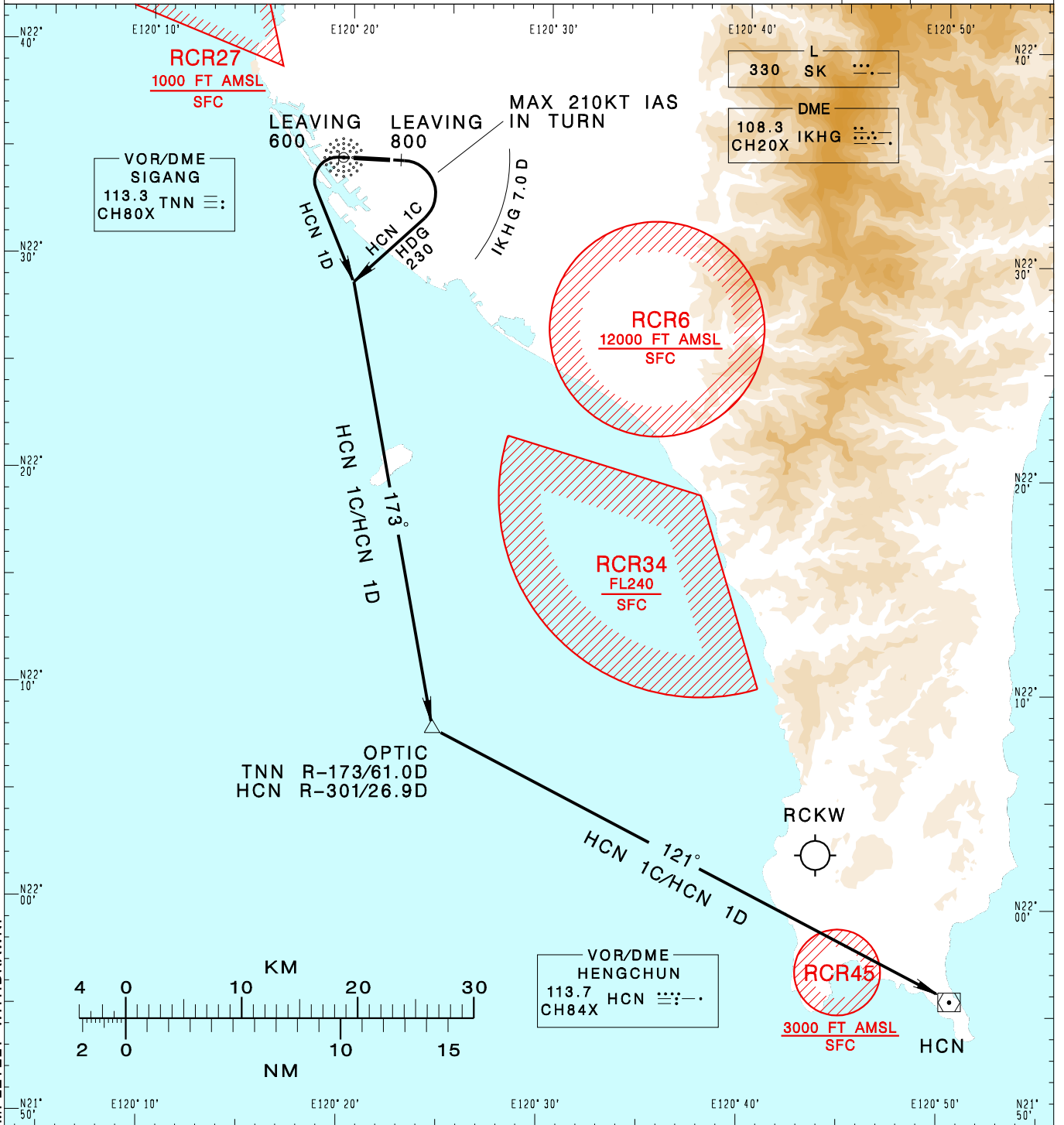
Apt Elev: 32' Trans Level: FL130 Trans Alt: 11,000'

BEARINGS ARE MAGNETIC; DISTANCES ARE NAUTICAL MILES; ELEVATIONS, HEIGHTS IN FEET

VAR 4° W



MSA SK 25NM



CHANGES: KW NDB COMPLETELY WITHDRAWN.

HENGCHUN ONE CHARLIE DEPARTURE
 Climb on RWY HDG until leaving 800ft, turn right HDG 230, complete the turn within 7.0D from IKHG, to track TNN R-173 to OPTIC, then track HCN R-301 to HCN.

HENGCHUN ONE DELTA DEPARTURE
 Climb on RWY HDG until leaving 600ft, turn left to track TNN R-173 to OPTIC, then track HCN R-301 to HCN.

- NOTE**
1. Minimum climb gradient required:
 HCN 1C: 6%(365ft/NM) until 2,000ft.
 HCN 1D: 4.3%(265ft/NM) until 2,000ft.
 2. Caution: pier cranes, terrain and stacks east, west and south of the airport.
 3. ATS surveillance required.